



Welcome to The Grove

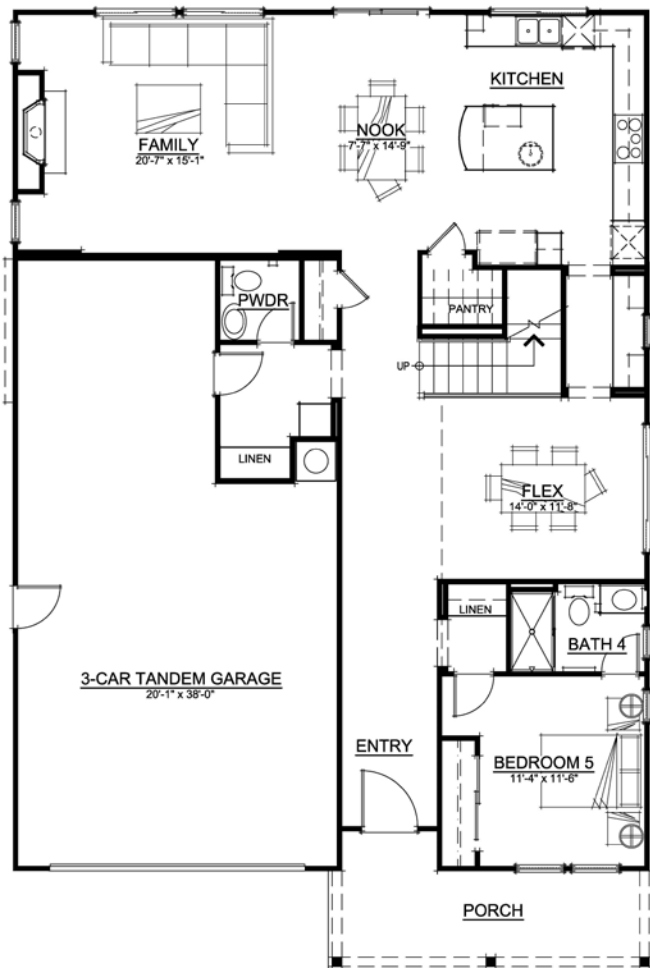
Plan 2 - Approximately 2,939 square feet
5 bedrooms, 4-1/2 baths and Three Car Garage - Two Story



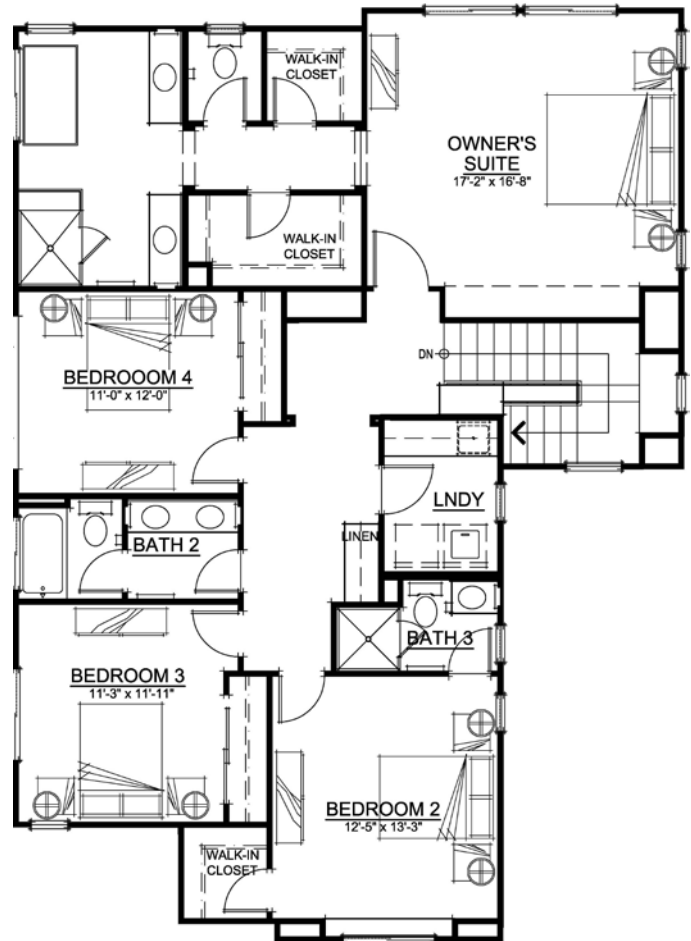
Farmhouse Style: Residences 2 and 4



Modern Style: Residence 5



FIRST FLOOR PLAN



SECOND FLOOR PLAN

This beautiful home was designed with elegance and comfort in mind. The gourmet kitchen features a large central island that flows into a spacious family room with nearby pantry and powder bath. A large flex room flooded with natural light can serve as a formal dining room, parlor or anything to suit your lifestyle. A comfortable junior suite rounds out the entry level. The upstairs delivers a grand owner's suite, another junior suite and two bedrooms that share a bath, all served by a generous and centrally located laundry.

Floorplans and elevation are artists' conceptions and may vary somewhat to actual construction and finishes. Price is subject to change at any time.

Edenbridge Homes
 Represented exclusively by
 Glenmere Properties, Inc.
 21771 Stevens Creek Blvd., Ste. 200A
 Cupertino, CA 95014
 DRE 01518532
www.edenbridgehomes.com

Equal Housing Opportunity
 Contact: Diane Downend (DRE 01707018)
 650-766-1502 diane@edenbridgehomes.com